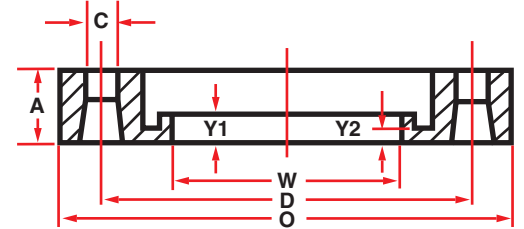
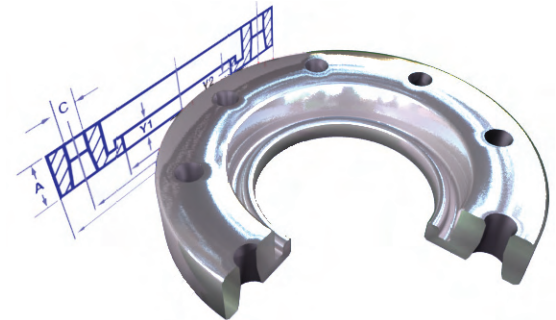




Anchorage - 5326 "A" Street Suite #3 • Anchorage, AK 99518 • (907) 677-9540 Fax (907) 677-9541  
Big Lake - Mile 3.5 South Big Lake Road • Big Lake, AK 99652 • (907) 892-8440 Fax (907) 892-8408

Nominal Pipe Size	Dimensions, Inches					Weight Lbs	Operating Pressure
	O	Q	W	n	C		
1	4.25	0.56	1.38	4	0.63	1	267
1-1/2	5.00	0.69	1.97	4	0.63	2	267
2	6.00	0.75	2.46	4	0.75	2	267
3	7.50	0.94	3.60	4	0.75	3	267
4	9.00	0.94	4.60	8	0.75	4	267
6	11.00	1.00	6.75	8	0.88	6	267
8	13.50	1.12	8.75	8	0.88	8	267
10	16.00	1.19	10.92	12	1.00	13	250
12	19.00	1.25	12.92	12	1.00	22	154



The rings will mate with the following flanges:

- Forged steel flanges, Class 150, per ANSI B16.5
- Plate steel flanges, 150lb. per AWWA C207
- Cast iron flanges, 125 lb. per ANSI B16.1

Physical Properties ASTM A351CF8M

Tensile Strength	70,000 psi
Yield Strength	30,000 psi
Elongated in 2"	30%